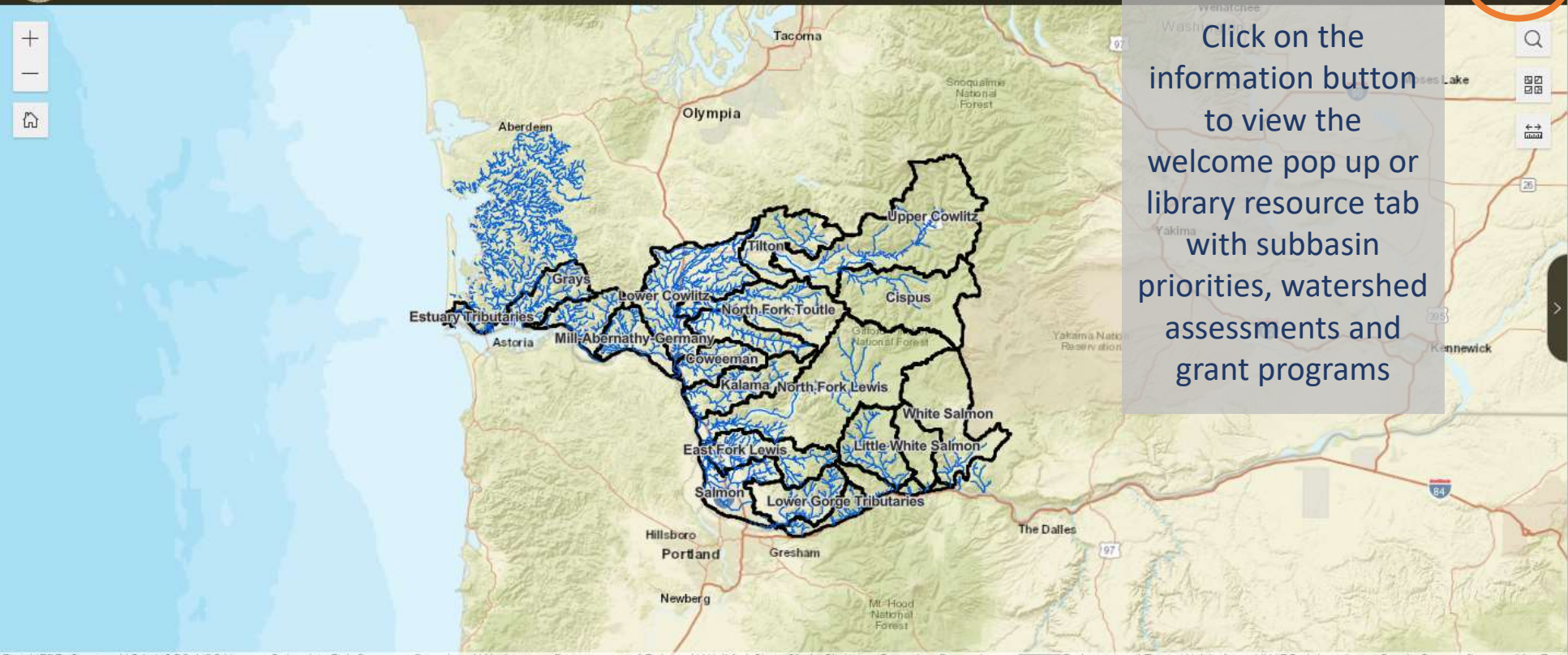




Lower Columbia Salmon Resource Map



Click on the information button to view the welcome pop up or library resource tab with subbasin priorities, watershed assessments and grant programs



Layers Filter Add Data Draw Print

- SRP Project Points
- Statewide Washington Integrated Fish Distribution
- SWIFD
 - Fish Distribution
- Lower Columbia River EDT Habitat Priorities
- High Resolution Change Detection
- Upper Cowlitz-Cispus Habitat Actions
- Upper Cowlitz-Cispus Landscape Units
- Lower Columbia River Landscape Units
- Lower Columbia River Subbasins
- Water Resource Inventory Areas
- Estuary Boundary
- Sections

Esri, HERE, Garmin, NGA, USGS, NPS | Lower Columbia Fish Recovery Board and Washington Department of Fish and Wildlife | Chris Clark, Christina Gonzales, Bruce Jones, ... Powered by Esri

SRP Project Points



SRP Project Nu...	Project Name	Description	Project Type	Project Display ...	Project Start Date	Project End Date	Primary Sponso...	SRP Project URL	PRISM F
00-1032	Washougal River: Slough ...	Washington State Parks ac...	Acquisition	Completed	6/1/2000, 12:00 AM	6/1/2002, 12:00 AM	State Parks & Recreation C...	View	View
00-1033	Birnie Creek Una Road Fis...	Washington Department ...	Restoration	Completed	3/17/2000, 12:00 AM	3/15/2005, 12:00 AM	Department of Fish and W...	View	View
00-1034	So. Fork Toutle	Cowlitz Game and Angler...	Restoration	Completed	5/15/2000, 12:00 AM	6/30/2003, 12:00 AM	Cowlitz Game and Anglers	View	View
00-1036	DuPuis Chelatchie Creek P...	Fish First used this fundin...	Restoration	Completed	3/17/2000, 12:00 AM	9/1/2003, 12:00 AM	Fish First	View	View



Lower Columbia Salmon Resource Map



Layers Filter Add Data Draw Print



You can search for an address or x and y coordinates, select a different basemap, and measure features on the map using the three buttons under the information icon.



- SRP Project Points
- Statewide Washington Integrated Fish Distribution
- SWIFD
 - Fish Distribution
- Lower Columbia River EDT Habitat Priorities
- High Resolution Change Detection
- Upper Cowlitz-Cispus Habitat Actions
- Upper Cowlitz-Cispus Landscape Units
- Lower Columbia River Landscape Units
- Lower Columbia River Subbasins
- Water Resource Inventory Areas
- Estuary Boundary
- Sections

Esri, HERE, Garmin, NGA, USGS, NPS | Lower Columbia Fish Recovery Board and Washington Department of Fish and Wildlife | Chris Clark, Christina Gonzales, Bruce Jones, ... Powered by Esri

SRP Project Points



SRP Project Nu...	Project Name	Description	Project Type	Project Display ...	Project Start Date	Project End Date	Primary Sponso...	SRP Project URL	PRISM F
00-1032	Washougal River: Slough ...	Washington State Parks ac...	Acquisition	Completed	6/1/2000, 12:00 AM	6/1/2002, 12:00 AM	State Parks & Recreation C...	View	View
00-1033	Birnie Creek Una Road Fis...	Washington Department ...	Restoration	Completed	3/17/2000, 12:00 AM	3/15/2005, 12:00 AM	Department of Fish and W...	View	View
00-1034	So. Fork Toutle	Cowlitz Game and Angler...	Restoration	Completed	5/15/2000, 12:00 AM	6/30/2003, 12:00 AM	Cowlitz Game and Anglers	View	View
00-1036	DuPuis Chelatchie Creek P...	Fish First used this fundin...	Restoration	Completed	3/17/2000, 12:00 AM	9/1/2003, 12:00 AM	Fish First	View	View



Lower Columbia Salmon Resource Map



Layers Filter Add Data Draw Print



- SRP Project Points
- Statewide Washington Integrated Fish Distribution
- SWIFD
 - Fish Distribution
- Lower Columbia River EDT Habitat Priorities
- High Resolution Change Detection
- Upper Cowlitz-Cispus Habitat Actions
- Upper Cowlitz-Cispus Landscape Units
- Lower Columbia River Landscape Units
- Lower Columbia River Subbasins
- Water Resource Inventory Areas
- Estuary Boundary
- Sections

Esri, HERE, Garmin, NGA, USGS, NPS | Lower Columbia Fish Recovery Board and Washington Department of Fish and Wildlife | Chris Clark, Christina Gonzales, Bruce Jones, ... Powered by Esri

SRP Project Points

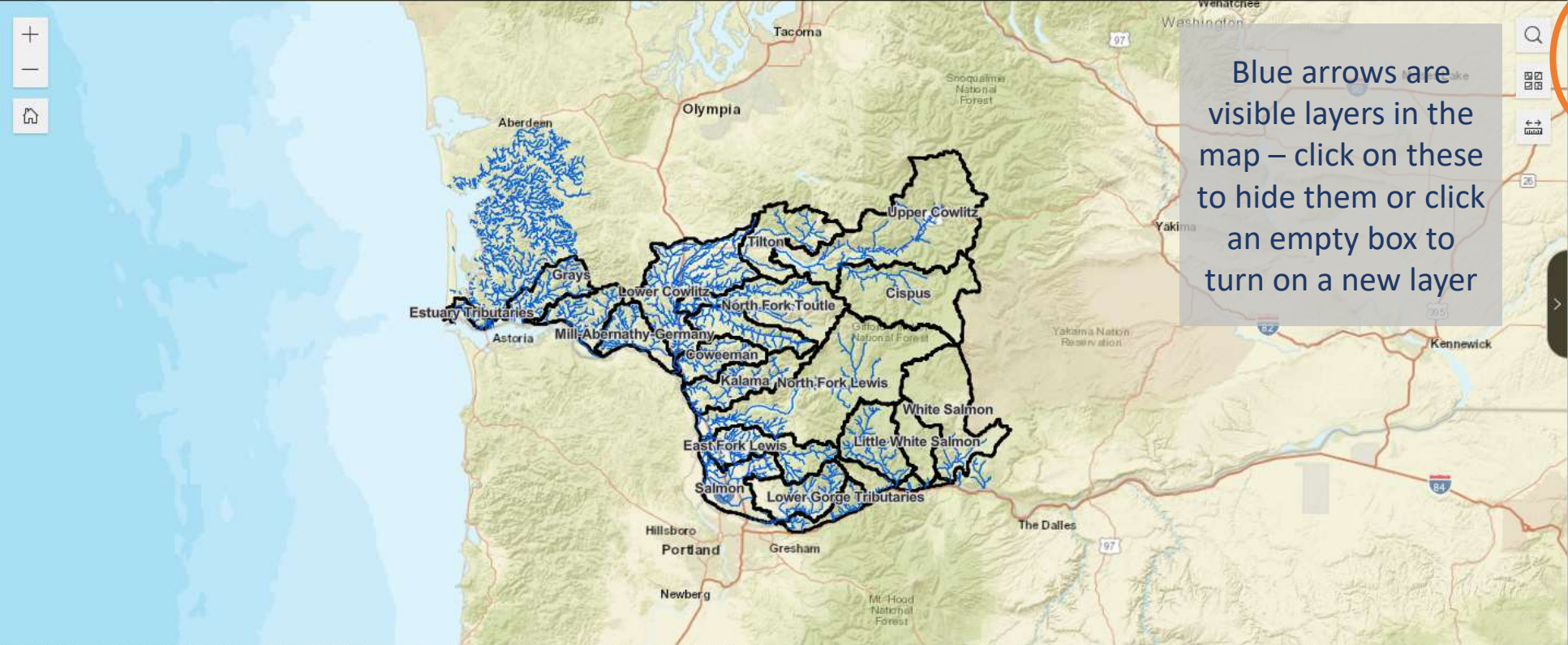


SRP Project Nu...	Project Name	Description	Project Type	Project Display ...	Project Start Date	Project End Date	Primary Sponso...	SRP Project URL	PRISM F
00-1032	Washougal River: Slough ...	Washington State Parks ac...	Acquisition	Completed	6/1/2000, 12:00 AM	6/1/2002, 12:00 AM	State Parks & Recreation C...	View	View
00-1033	Birnie Creek Una Road Fis...	Washington Department ...	Restoration	Completed	3/17/2000, 12:00 AM	3/15/2005, 12:00 AM	Department of Fish and W...	View	View
00-1034	So. Fork Toutle	Cowlitz Game and Angler...	Restoration	Completed	5/15/2000, 12:00 AM	6/30/2003, 12:00 AM	Cowlitz Game and Anglers	View	View
00-1036	DuPuis Chelatchie Creek P...	Fish First used this fundin...	Restoration	Completed	3/17/2000, 12:00 AM	9/1/2003, 12:00 AM	Fish First	View	View



Lower Columbia Salmon Resource Map

Layers Filter Add Data Draw Print



Blue arrows are visible layers in the map - click on these to hide them or click an empty box to turn on a new layer

- SRP Project Points
- Statewide Washington Integrated Fish Distribution
- NWIFD
 - Fish Distribution
- Lower Columbia River EDT Habitat Priorities
- High Resolution Change Detection
- Upper Cowlitz-Cispus Habitat Actions
- Upper Cowlitz-Cispus Landscape Units
- Lower Columbia River Landscape Units
- Lower Columbia River Subbasins
- Water Resource Inventory Areas
- Estuary Boundary
- Sections

Esri, HERE, Garmin, NGA, USGS, NPS | Lower Columbia Fish Recovery Board and Washington Department of Fish and Wildlife | Chris Clark, Christina Gonzales, Bruce Jones, ... Powered by Esri

SRP Project Points



SRP Project Nu...	Project Name	Description	Project Type	Project Display ...	Project Start Date	Project End Date	Primary Sponso...	SRP Project URL	PRISM F
00-1032	Washougal River: Slough ...	Washington State Parks ac...	Acquisition	Completed	6/1/2000, 12:00 AM	6/1/2002, 12:00 AM	State Parks & Recreation C...	View	View
00-1033	Birnie Creek Una Road Fis...	Washington Department ...	Restoration	Completed	3/17/2000, 12:00 AM	3/15/2005, 12:00 AM	Department of Fish and W...	View	View
00-1034	So. Fork Toutle	Cowlitz Game and Angler...	Restoration	Completed	5/15/2000, 12:00 AM	6/30/2003, 12:00 AM	Cowlitz Game and Anglers	View	View
00-1036	DuPuis Chelatchie Creek P...	Fish First used this fundin...	Restoration	Completed	3/17/2000, 12:00 AM	9/1/2003, 12:00 AM	Fish First	View	View



Lower Columbia Salmon Resource Map



Layers Filter Add Data Draw Print



You can view layer symbology details by clicking on the three dashed lines next to it in the layer list

Hint – the layer needs to be selected (visible) for this to work!

- SRP Project Points
- Statewide Washington Integrated Fish Distribution
- SWIFD
 - Fish Distribution
- Lower Columbia River EDT Habitat Priorities
- High Resolution Change Detection
- Upper Cowlitz-Cispus Habitat Actions
- Upper Cowlitz-Cispus Landscape Units
- Lower Columbia River Landscape Units
- Lower Columbia River Subbasins
- Water Resource Inventory Areas
- Estuary Boundary
- Sections

Esri, HERE, Garmin, NGA, USGS, NPS | Lower Columbia Fish Recovery Board and Washington Department of Fish and Wildlife | Chris Clark, Christina Gonzales, Bruce Jones, ... Powered by Esri

SRP Project Points



SRP Project Nu...	Project Name	Description	Project Type	Project Display ...	Project Start Date	Project End Date	Primary Sponso...	SRP Project URL	PRISM F
00-1032	Washougal River: Slough ...	Washington State Parks ac...	Acquisition	Completed	6/1/2000, 12:00 AM	6/1/2002, 12:00 AM	State Parks & Recreation C...	View	View
00-1033	Birnie Creek Una Road Fis...	Washington Department ...	Restoration	Completed	3/17/2000, 12:00 AM	3/15/2005, 12:00 AM	Department of Fish and W...	View	View
00-1034	So. Fork Toutle	Cowlitz Game and Angler...	Restoration	Completed	5/15/2000, 12:00 AM	6/30/2003, 12:00 AM	Cowlitz Game and Anglers	View	View
00-1036	DuPuis Chelatchie Creek P...	Fish First used this fundin...	Restoration	Completed	3/17/2000, 12:00 AM	9/1/2003, 12:00 AM	Fish First	View	View



Lower Columbia Salmon Resource Map



Layers Filter Add Data Draw Print



Click on the three dots next to a layer name to access more details on the layer source, applications and data attributes. You can also export a table view of LCFRB layers

Hint – LCFRB layers are circled in purple

- SRP Project Points
- Statewide Washington Integrated Fish Distribution
- SWIFD
 - Fish Distribution
- Lower Columbia River EDT Habitat Priorities
- High Resolution Change Detection
- Upper Cowlitz-Cispus Habitat Actions
- Upper Cowlitz-Cispus Landscape Units
- Lower Columbia River Landscape Units
- Lower Columbia River Subbasins

Details

View in table

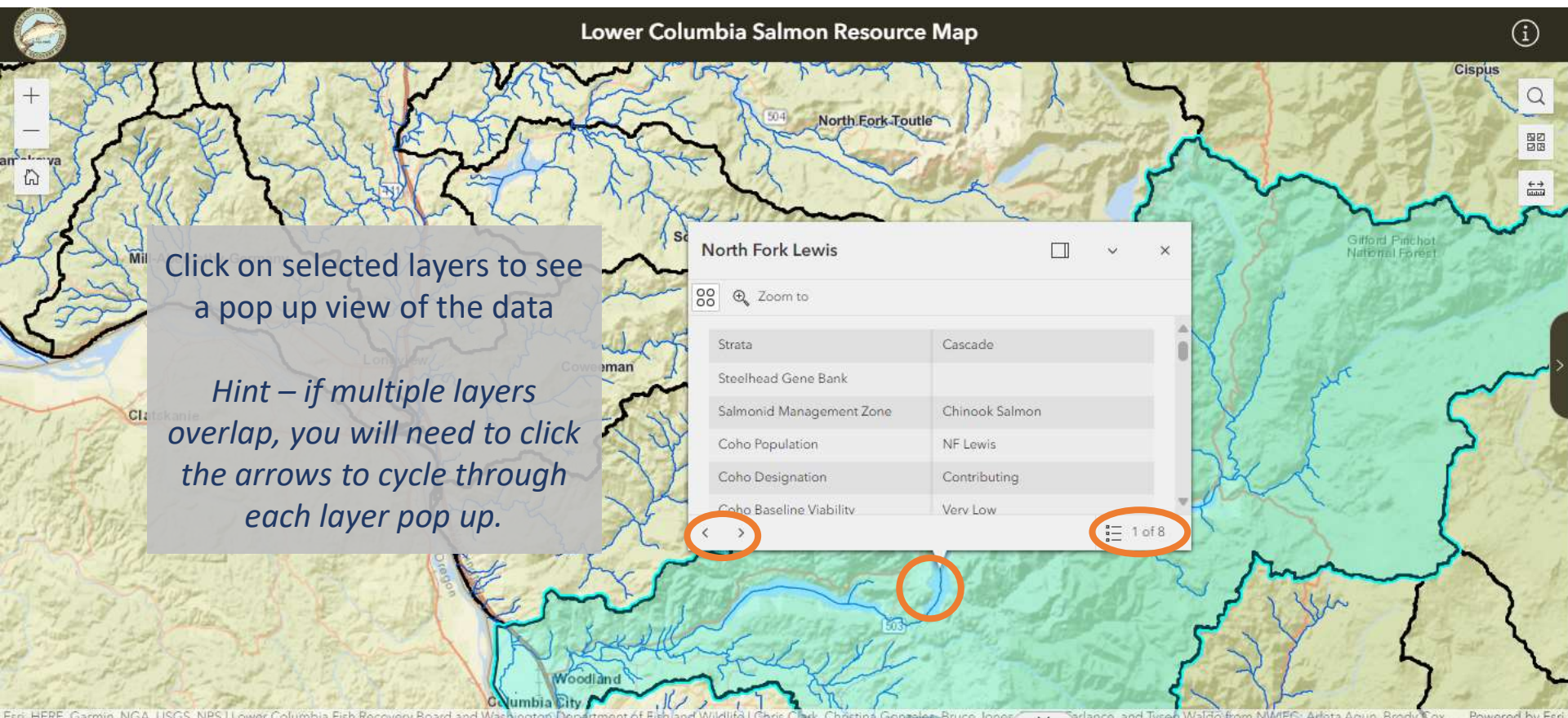
Export

Esri, HERE, Garmin, NGA, USGS, NPS | Lower Columbia Fish Recovery Board and Washington Department of Fish and Wildlife | Chris Clark; Christina Gonzales, Bruce Jones, ... Powered by Esri

SRP Project Points



SRP Project Nu...	Project Name	Description	Project Type	Project Display ...	Project Start Date	Project End Date	Primary Sponso...	SRP Project URL	PRISM F
00-1032	Washougal River: Slough ...	Washington State Parks ac...	Acquisition	Completed	6/1/2000, 12:00 AM	6/1/2002, 12:00 AM	State Parks & Recreation C...	View	View
00-1033	Birnie Creek Una Road Fis...	Washington Department ...	Restoration	Completed	3/17/2000, 12:00 AM	3/15/2005, 12:00 AM	Department of Fish and W...	View	View
00-1034	So. Fork Toutle	Cowlitz Game and Angler...	Restoration	Completed	5/15/2000, 12:00 AM	6/30/2003, 12:00 AM	Cowlitz Game and Anglers	View	View
00-1036	DuPuis Chelatchie Creek P...	Fish First used this fundin...	Restoration	Completed	3/17/2000, 12:00 AM	9/1/2003, 12:00 AM	Fish First	View	View



Layers Filter Add Data Draw Print

- SRP Project Points
- Statewide Washington Integrated Fish Distribution
 - SWIFD
 - Fish Distribution
- Lower Columbia River EDT Habitat Priorities
- High Resolution Change Detection
- Upper Cowlitz-Cispus Habitat Actions
- Upper Cowlitz-Cispus Landscape Units
- Lower Columbia River Landscape Units
- Lower Columbia River Subbasins
- Water Resource Inventory Areas
- Estuary Boundary
- Sections

SRP Project Points

Esri, HERE, Garmin, NGA, USGS, NPS | Lower Columbia Fish Recovery Board and Washington Department of Fish and Wildlife | Chris Clark, Christina Gopzeles, Bruce Jones, ... and Tyson Waldo from NWIFG; Arleta Agun, Brody Cox... Powered by Esri

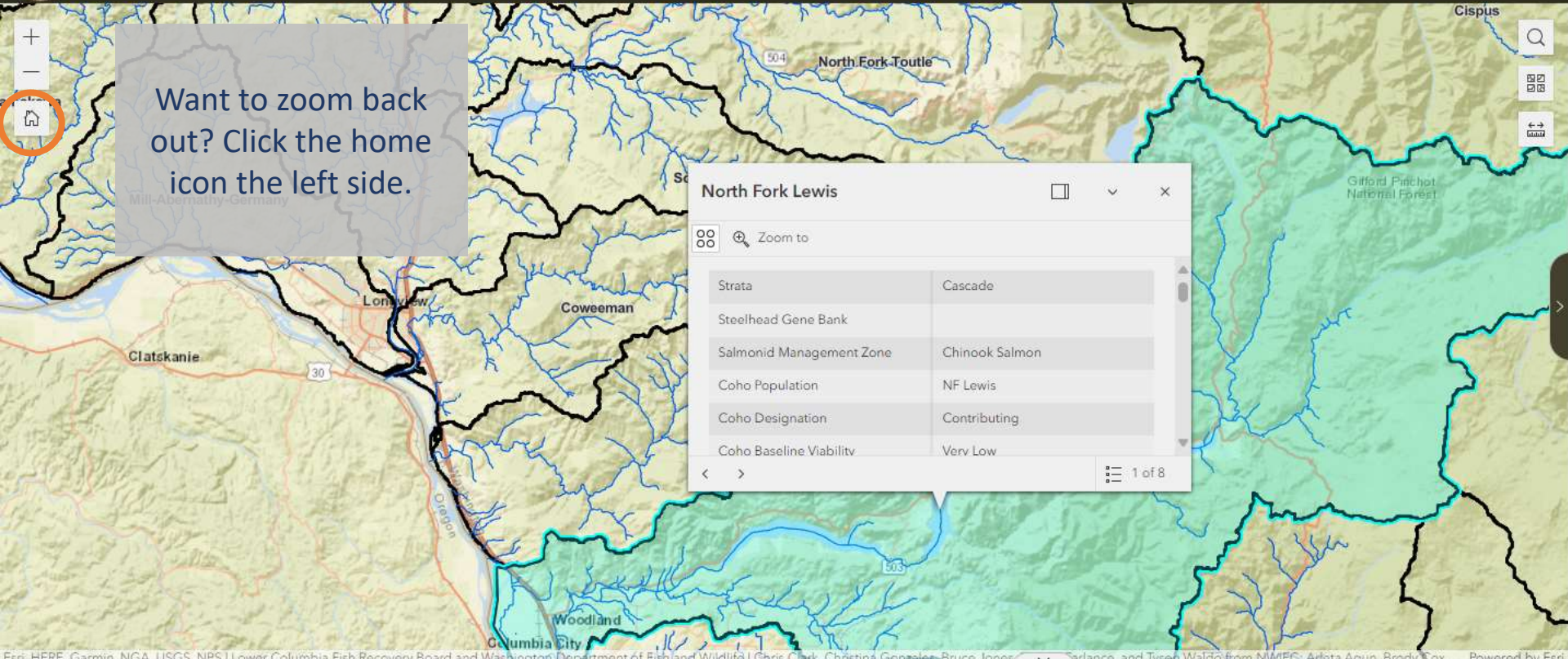
SRP Project Nu...	Project Name	Description	Project Type	Project Display ...	Project Start Date	Project End Date	Primary Sponso...	SRP Project URL	PRISM F
00-1032	Washougal River: Slough ...	Washington State Parks ac...	Acquisition	Completed	6/1/2000, 12:00 AM	6/1/2002, 12:00 AM	State Parks & Recreation C...	View	View
00-1033	Birnie Creek Una Road Fis...	Washington Department ...	Restoration	Completed	3/17/2000, 12:00 AM	3/15/2005, 12:00 AM	Department of Fish and W...	View	View
00-1034	So. Fork Toutle	Cowlitz Game and Angler...	Restoration	Completed	5/15/2000, 12:00 AM	6/30/2003, 12:00 AM	Cowlitz Game and Anglers	View	View
00-1036	DuPuis Chelatchie Creek P...	Fish First used this fundin...	Restoration	Completed	3/17/2000, 12:00 AM	9/1/2003, 12:00 AM	Fish First	View	View



Lower Columbia Salmon Resource Map



Layers Filter Add Data Draw Print



Want to zoom back out? Click the home icon the left side.

North Fork Lewis	
Strata	Cascade
Steelhead Gene Bank	
Salmonid Management Zone	Chinook Salmon
Coho Population	NF Lewis
Coho Designation	Contributing
Coho Baseline Viabilitv	Very Low

Layers Filter Add Data Draw Print

- SRP Project Points
- Statewide Washington Integrated Fish Distribution
 - SWIFD
 - Fish Distribution
- Lower Columbia River EDT Habitat Priorities
- High Resolution Change Detection
- Upper Cowlitz-Cispus Habitat Actions
- Upper Cowlitz-Cispus Landscape Units
- Lower Columbia River Landscape Units
- Lower Columbia River Subbasins
- Water Resource Inventory Areas
- Estuary Boundary
- Sections

SRP Project Points



SRP Project Nu...	Project Name	Description	Project Type	Project Display ...	Project Start Date	Project End Date	Primary Sponso...	SRP Project URL	PRISM F
00-1032	Washougal River: Slough ...	Washington State Parks ac...	Acquisition	Completed	6/1/2000, 12:00 AM	6/1/2002, 12:00 AM	State Parks & Recreation C...	View	View
00-1033	Birnie Creek Una Road Fis...	Washington Department ...	Restoration	Completed	3/17/2000, 12:00 AM	3/15/2005, 12:00 AM	Department of Fish and W...	View	View
00-1034	So. Fork Toutle	Cowlitz Game and Angler...	Restoration	Completed	5/15/2000, 12:00 AM	6/30/2003, 12:00 AM	Cowlitz Game and Anglers	View	View
00-1036	DuPuis Chelatchie Creek P...	Fish First used this fundin...	Restoration	Completed	3/17/2000, 12:00 AM	9/1/2003, 12:00 AM	Fish First	View	View



Lower Columbia Salmon Resource Map



Layers Filter Add Data Draw Print

Want to move the pop up?
Click the dock icon the left side. This will anchor the pop up window and allow you to navigate the map

North Fork Lewis [dock icon] [close icon]

Zoom to

Strata	Cascade
Steelhead Gene Bank	
Salmonid Management Zone	Chinook Salmon
Coho Population	NF Lewis
Coho Designation	Contributing
Coho Baseline Viabilitv	Very Low

< > 1 of 8

SRP Project Points

Statewide Washington Integrated Fish Distribution

SWIFD

Lower Columbia River EDT Habitat Priorities

High Resolution Change Detection

Upper Cowlitz-Cispus Habitat Actions

Upper Cowlitz-Cispus Landscape Units

Lower Columbia River Landscape Units

Lower Columbia River Subbasins

Water Resource Inventory Areas

Estuary Boundary

Sections

Esri, HERE, Garmin, NGA, USGS, NPS | Lower Columbia Fish Recovery Board and Washington Department of Fish and Wildlife | Chris Clark, Christina Gopzeles, Bruce Jones, ... and Tyson Waldo from NWIFG; Arleta Agun, Brody Cox... Powered by Esri

SRP Project Points



SRP Project Nu...	Project Name	Description	Project Type	Project Display ...	Project Start Date	Project End Date	Primary Sponso...	SRP Project URL	PRISM F
00-1032	Washougal River: Slough ...	Washington State Parks ac...	Acquisition	Completed	6/1/2000, 12:00 AM	6/1/2002, 12:00 AM	State Parks & Recreation C...	View	View
00-1033	Birnie Creek Una Road Fis...	Washington Department ...	Restoration	Completed	3/17/2000, 12:00 AM	3/15/2005, 12:00 AM	Department of Fish and W...	View	View
00-1034	So. Fork Toutle	Cowlitz Game and Angler...	Restoration	Completed	5/15/2000, 12:00 AM	6/30/2003, 12:00 AM	Cowlitz Game and Anglers	View	View
00-1036	DuPuis Chelatchie Creek P...	Fish First used this fundin...	Restoration	Completed	3/17/2000, 12:00 AM	9/1/2003, 12:00 AM	Fish First	View	View



Lower Columbia Salmon Resource Map



Layers Filter Add Data Draw Print

You can then click the undock icon to move it back to where you originally clicked on the map.



North Fork Lewis

Zoom to

Strata	Cascade
Steelhead Gene Bank	
Salmonid Management Zone	Chinook Salmon
Coho Population	NF Lewis
Coho Designation	Contributing
Coho Baseline Viability	Very Low
Coho 2020 Viability	Low
Coho Goal Viability	Low
Fall Chinook Population	Lewis
Fall Chinook Designation	Primary
Fall Chinook Baseline Viability	Very Low

Layers

- SRP Project Points
- Statewide Washington Integrated Fish Distribution
- SWIFD
 - Fish Distribution
- Lower Columbia River EDT Habitat Priorities
- High Resolution Change Detection
- Upper Cowlitz-Cispus Habitat Actions
- Upper Cowlitz-Cispus Landscape Units
- Lower Columbia River Landscape Units
- Lower Columbia River Subbasins
- Water Resource Inventory Areas
- Estuary Boundary

County of Clark, Bureau of Land Management, State of Oregon GEO, State of Oregon, Esri, HERE, Garmin, NGA, USGS, NPS, U.S. Forest Service | Lower Columbia Fish Recor... and Washington Department of Fish and Wildlife | Chris Clark, ... Powered By Esri

SRP Project Points



SRP Project Nu...	Project Name	Description	Project Type	Project Display ...	Project Start Date	Project End Date	Primary Sponso...	SRP Project URL	PRISM Pr...
00-1032	Washougal River: Slough ...	Washington State Parks ac...	Acquisition	Completed	6/1/2000, 12:00 AM	6/1/2002, 12:00 AM	State Parks & Recreation C...	View	View
00-1033	Birnie Creek Una Road Fis...	Washington Department ...	Restoration	Completed	3/17/2000, 12:00 AM	3/15/2005, 12:00 AM	Department of Fish and W...	View	View
00-1034	So. Fork Toutle	Cowlitz Game and Angler...	Restoration	Completed	5/15/2000, 12:00 AM	6/30/2003, 12:00 AM	Cowlitz Game and Anglers	View	View
00-1036	DuPuis Chelatchie Creek P...	Fish First used this fundin...	Restoration	Completed	3/17/2000, 12:00 AM	9/1/2003, 12:00 AM	Fish First	View	View



Lower Columbia Salmon Resource Map

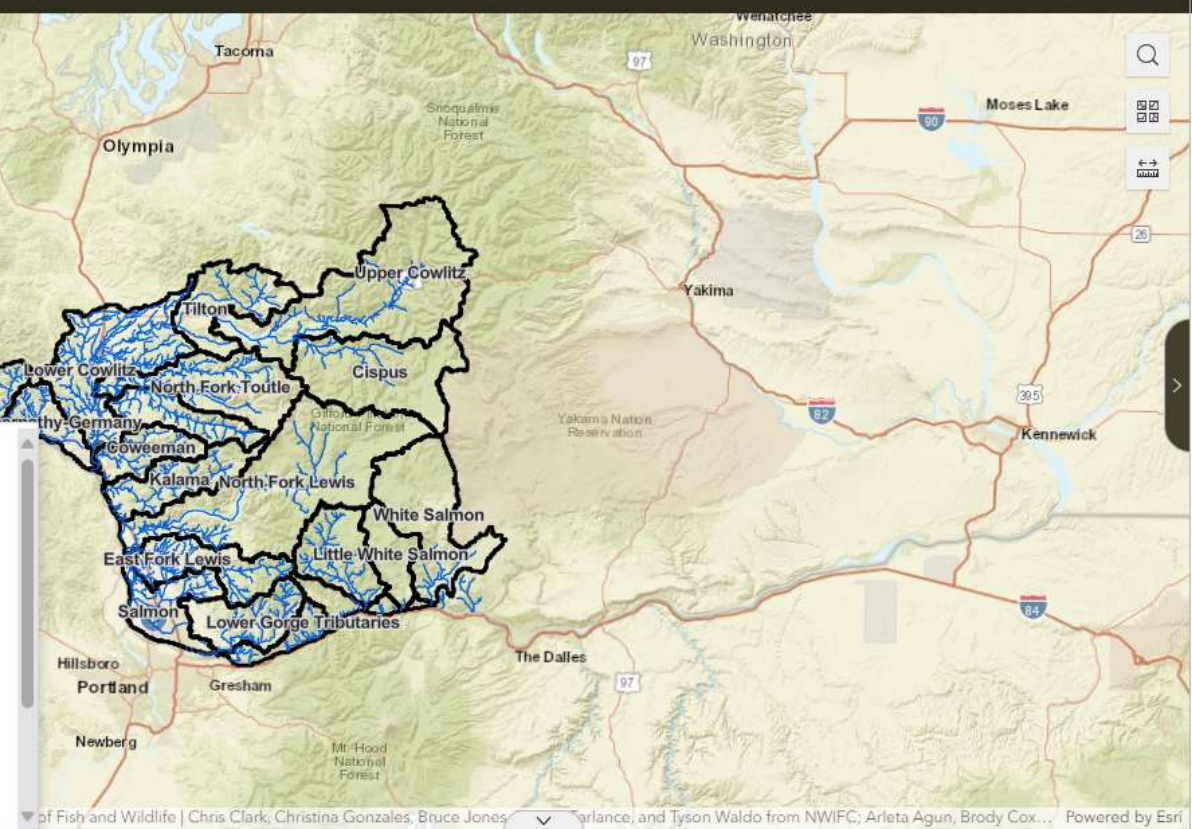


Layers Filter Add Data Draw Print



You can view tabular data for the layers by selecting them in the table drop down menu

- SRP Project Points
- Statewide Washington Integrated Fish Distribution
- Lower Columbia River EDT Habitat Priorities
- High Resolution Change Detection
- Upper Cowlitz-Cispus Habitat Actions
- Upper Cowlitz-Cispus Landscape Units
- Lower Columbia River Landscape Units
- Lower Columbia River Subbasins
- Water Resource Inventory Areas
- Estuary Boundary
- Parcel Boundaries



- SRP Project Points
- Statewide Washington Integrated Fish Distribution
 - SWIFD
 - Fish Distribution
- Lower Columbia River EDT Habitat Priorities
- High Resolution Change Detection
- Upper Cowlitz-Cispus Habitat Actions
- Upper Cowlitz-Cispus Landscape Units
- Lower Columbia River Landscape Units
- Lower Columbia River Subbasins
- Water Resource Inventory Areas
- Estuary Boundary
- Sections

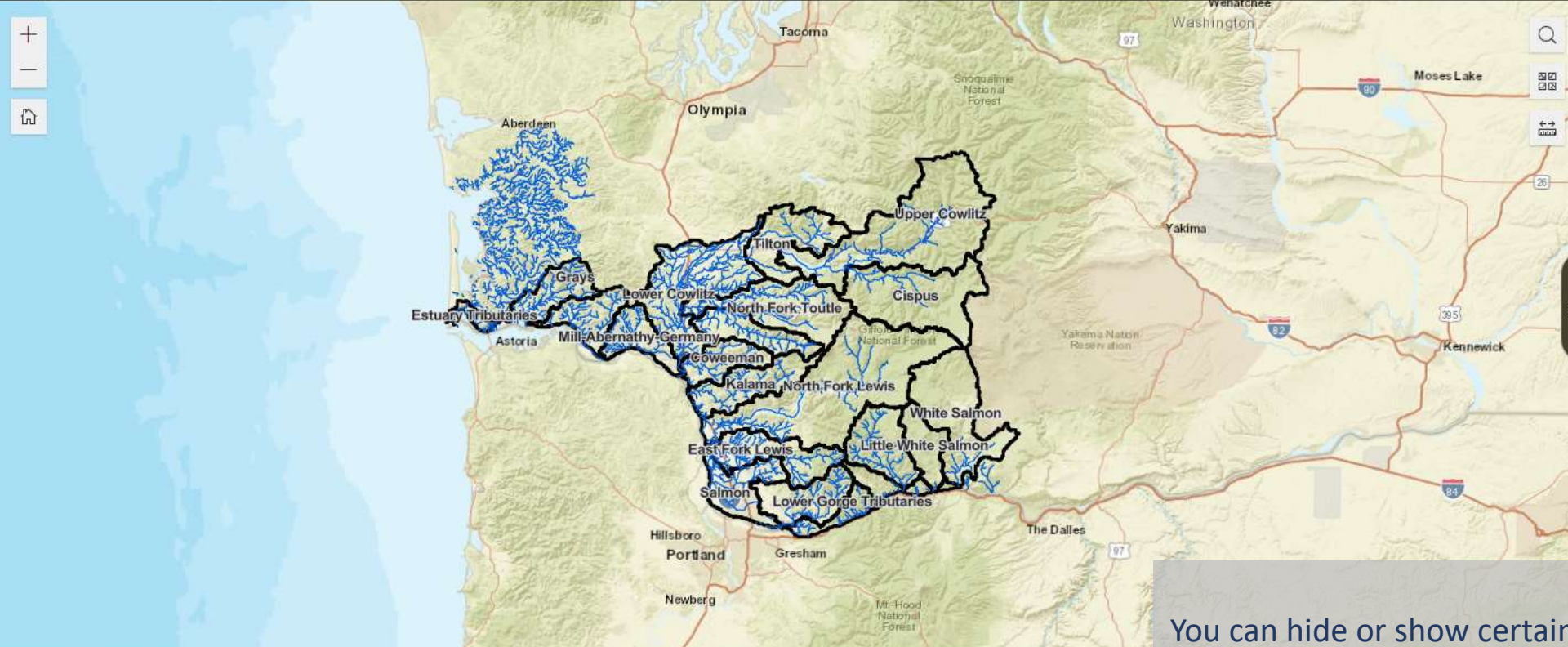
SRP Project Nu...	Project Name	Description	Project Type	Project Display ...	Project Start Date	Project End Date	Primary Sponso...	SRP Project URL	PRISM F
00-1032	Washougal River: Slough ...	Washington State Parks ac...	Acquisition	Completed	6/1/2000, 12:00 AM	6/1/2002, 12:00 AM	State Parks & Recreation C...	View	View
00-1033	Birnie Creek Una Road Fis...	Washington Department ...	Restoration	Completed	3/17/2000, 12:00 AM	3/15/2005, 12:00 AM	Department of Fish and W...	View	View
00-1034	So. Fork Toutle	Cowlitz Game and Angler...	Restoration	Completed	5/15/2000, 12:00 AM	6/30/2003, 12:00 AM	Cowlitz Game and Anglers	View	View
00-1036	DuPuis Chelatchie Creek P...	Fish First used this fundin...	Restoration	Completed	3/17/2000, 12:00 AM	9/1/2003, 12:00 AM	Fish First	View	View



Lower Columbia Salmon Resource Map



Layers Filter Add Data Draw Print



Layers

- SRP Project Points
- Statewide Washington Integrated Fish Distribution

SWIFD

- Lower Columbia River EDT Habitat Priorities
- High Resolution Change Detection
- Upper Cowlitz-Cispus Habitat Actions
- Upper Cowlitz-Cispus Landscape Units
- Lower Columbia River ...
- Lower Columbia River ...
- Water Resource Inven...
- Estuary Boundary
- Sections

Search

- SRP Project Number
- Project Name
- Description
- Project Type
- Project Display Status
- Project Start Date
- Project End Date

SRP Project Points

You can hide or show certain fields in the table view

Esri, HERE, Garmin, NGA, USGS, NPS | Lower Columbia Fish Recovery Board and Washington Department of Fish and Wildlife | Chris Clark, Christina Gonzales, Bruce Jones, ...

SRP Project Points

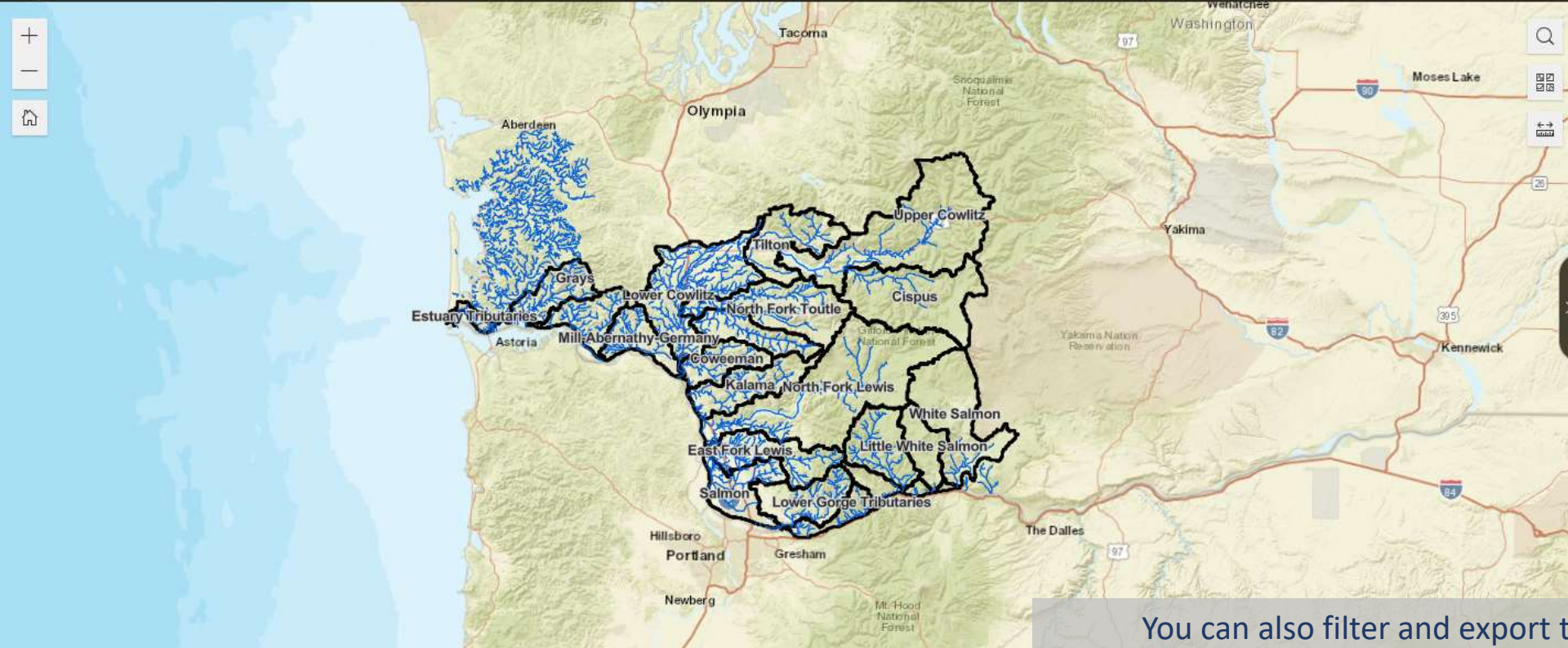
SRP Project Nu...	Project Name	Description	Project Type	Project Display ...	Project Start Date	Project End Date	Primary Sponso...	SRP Project URL	PRISM F
00-1032	Washougal River: Slough ...	Washington State Parks ac...	Acquisition	Completed	6/1/2000, 12:00 AM	6/1/2002, 12:00 AM	State Parks & Recreation C...	View	View
00-1033	Birnie Creek Una Road Fis...	Washington Department ...	Restoration	Completed	3/17/2000, 12:00 AM	3/15/2005, 12:00 AM	Department of Fish and W...	View	View
00-1034	So. Fork Toutle	Cowlitz Game and Angler...	Restoration	Completed	5/15/2000, 12:00 AM	6/30/2003, 12:00 AM	Cowlitz Game and Anglers	View	View
00-1036	DuPuis Chelatchie Creek P...	Fish First used this fundin...	Restoration	Completed	3/17/2000, 12:00 AM	9/1/2003, 12:00 AM	Fish First	View	View



Lower Columbia Salmon Resource Map



Layers Filter Add Data Draw Print



SRP Project Points

Statewide Washington Integrated Fish Distribution

SWIFD

Lower Columbia River EDT Habitat Priorities

High Resolution Change Detection

Upper Cowlitz-Cispus Habitat Actions

Upper Cowlitz-Cispus Landscape Units

Lower Columbia River Landscape Units

Lower Columbia River Subbasins

Water Resource Inventory Areas

Boundary

Sections

You can also filter and export table data.

Hint – make sure the layer is clicked on to see filters displayed on the map

☰ ☱ ☲ ☳ ☴ ☵ ☶ ☷

All data (1354)

- Set filter
- Zoom to
- Pan to
- Export

Esri, HERE, Garmin, NGA, USGS, NPS | Lower Columbia Fish Recovery Board and Washington Department of Fish and Wildlife | Chris Clark, Christina Gonzales, Bruce Jones

SRP Project Points

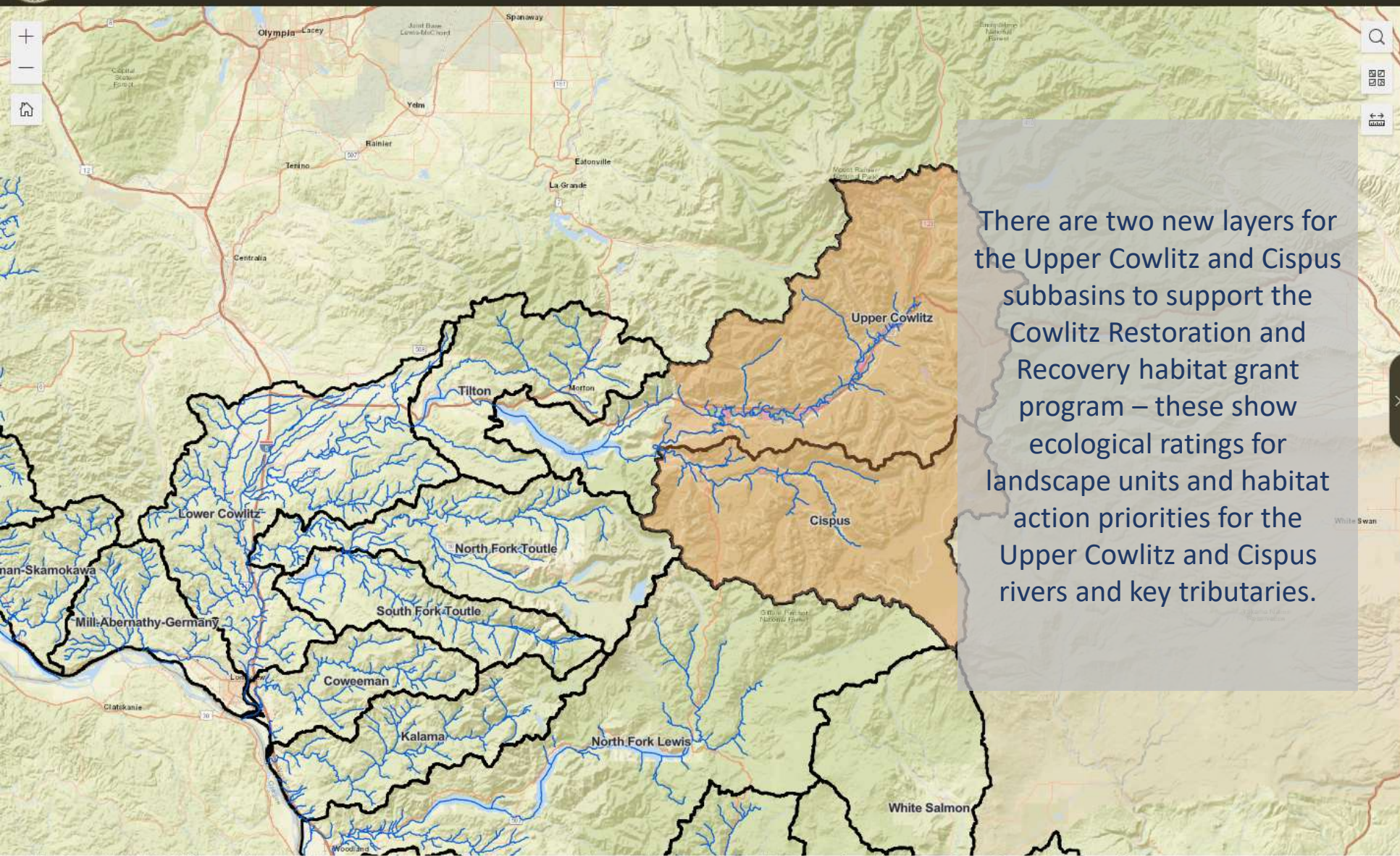
SRP Project Nu...	Project Name	Description	Project Type	Project Display ...	Project Start Date	Project End Date	Primary Sponso...	SRP Project URL
00-1032	Washougal River: Slough ...	Washington State Parks ac...	Acquisition	Completed	6/1/2000, 12:00 AM	6/1/2002, 12:00 AM	State Parks & Recreation C...	View
00-1033	Birnie Creek Una Road Fis...	Washington Department ...	Restoration	Completed	3/17/2000, 12:00 AM	3/15/2005, 12:00 AM	Department of Fish and W...	View
00-1034	So. Fork Toutle	Cowlitz Game and Angler...	Restoration	Completed	5/15/2000, 12:00 AM	6/30/2003, 12:00 AM	Cowlitz Game and Anglers	View
00-1036	DuPuis Chelatchie Creek P...	Fish First used this fundin...	Restoration	Completed	3/17/2000, 12:00 AM	9/1/2003, 12:00 AM	Fish First	View



Lower Columbia Salmon Resource Map



Layers Filter Add Data Draw Print



There are two new layers for the Upper Cowlitz and Cispus subbasins to support the Cowlitz Restoration and Recovery habitat grant program – these show ecological ratings for landscape units and habitat action priorities for the Upper Cowlitz and Cispus rivers and key tributaries.

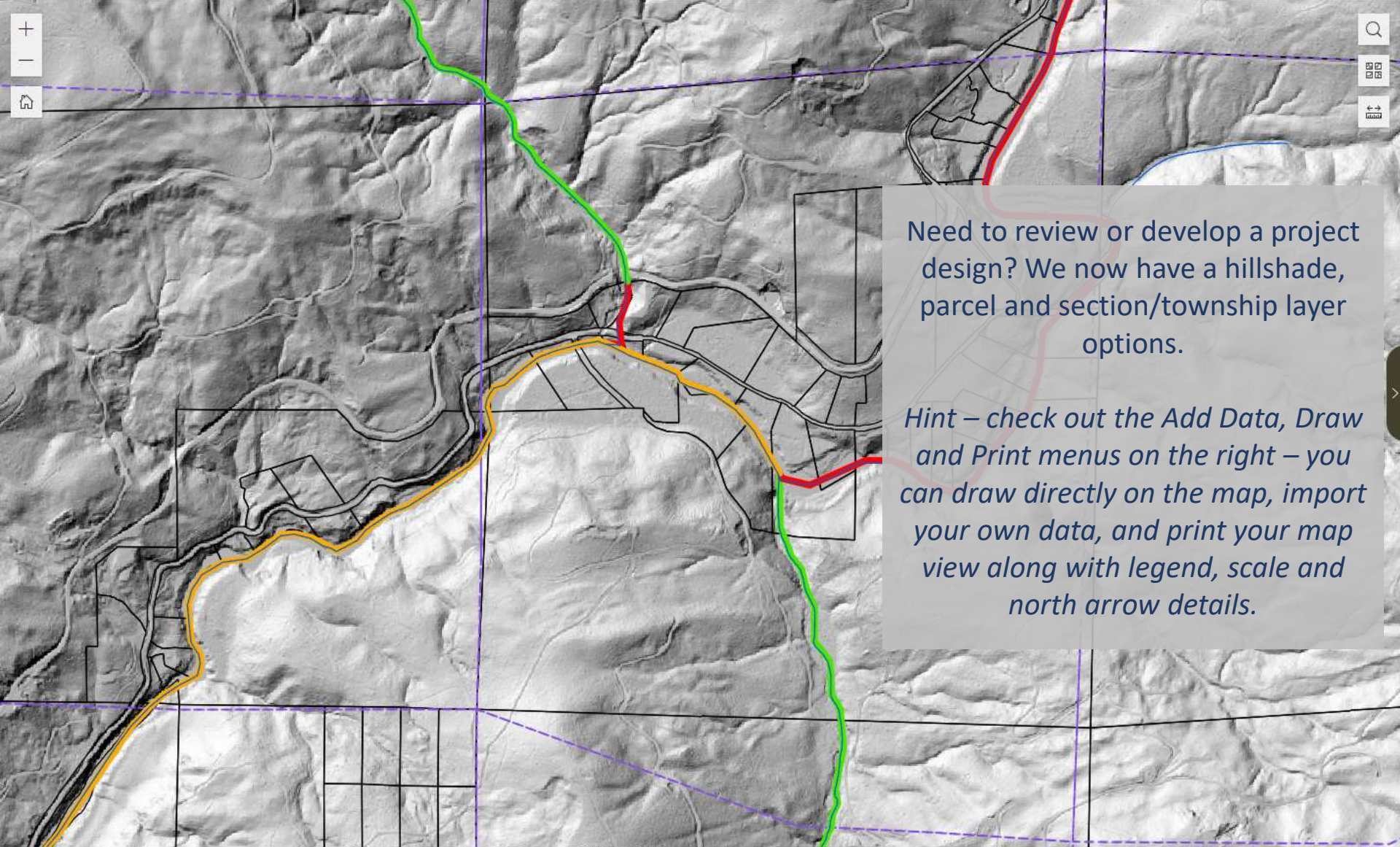
- SRP Project Points
- Statewide Washington Integrated Fish Distribution
- SWIFD
 - Fish Distribution
- Lower Columbia River EDT Habitat Priorities
- High Resolution Change Detection
- Upper Cowlitz-Cispus Habitat Actions
 - Enhance and Create
 - Protect
 - Reconnect and Restore
 - Strategic
 - others
- Upper Cowlitz-Cispus Landscape Units
- Lower Columbia River Landscape Units
- Lower Columbia River Subbasins
- Water Resource Inventory Areas
- Estuary Boundary
- Sections



Lower Columbia Salmon Resource Map



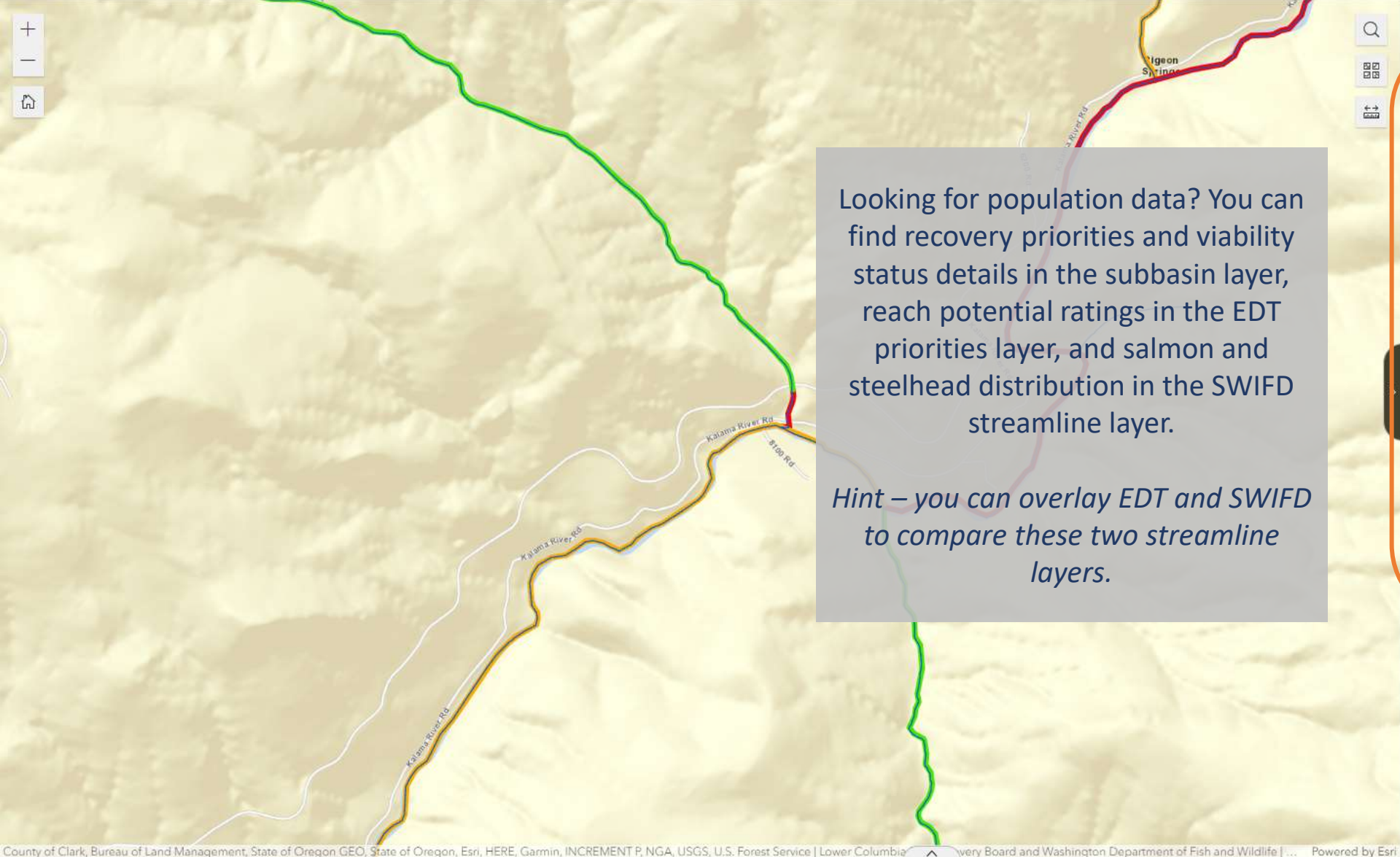
Layers Filter **Add Data** Draw Print



Need to review or develop a project design? We now have a hillshade, parcel and section/township layer options.

Hint – check out the Add Data, Draw and Print menus on the right – you can draw directly on the map, import your own data, and print your map view along with legend, scale and north arrow details.

- SRP Project Points
- Statewide Washington Integrated Fish Distribution
 - SWIFD
 - Fish Distribution
- Lower Columbia River EDT Habitat Priorities
- High Resolution Change Detection
- Upper Cowlitz-Cispus Habitat Actions
- Upper Cowlitz-Cispus Landscape Units
- Lower Columbia River Landscape Units
- Lower Columbia River Subbasins
- Water Resource Inventory Areas
- Estuary Boundary
- Sections
- Parcel Boundaries
- County Boundaries
- Legislative Districts
- Lead Entity Boundary
- Lidar Hillshade



Looking for population data? You can find recovery priorities and viability status details in the subbasin layer, reach potential ratings in the EDT priorities layer, and salmon and steelhead distribution in the SWIFD streamline layer.

Hint – you can overlay EDT and SWIFD to compare these two streamline layers.

SRP Project Points

Statewide Washington Integrated Fish Distribution

SWIFD

- Fish Distribution

Lower Columbia River EDT Habitat Priorities

- 1
- 2
- 3
- 4

High Resolution Change Detection

Upper Cowlitz-Cispus Habitat Actions

Upper Cowlitz-Cispus Landscape Units

Lower Columbia River Landscape Units

Lower Columbia River Subbasins

Water Resource Inventory Areas

Estuary Boundary

Sections

Parcel Boundaries

County Boundaries

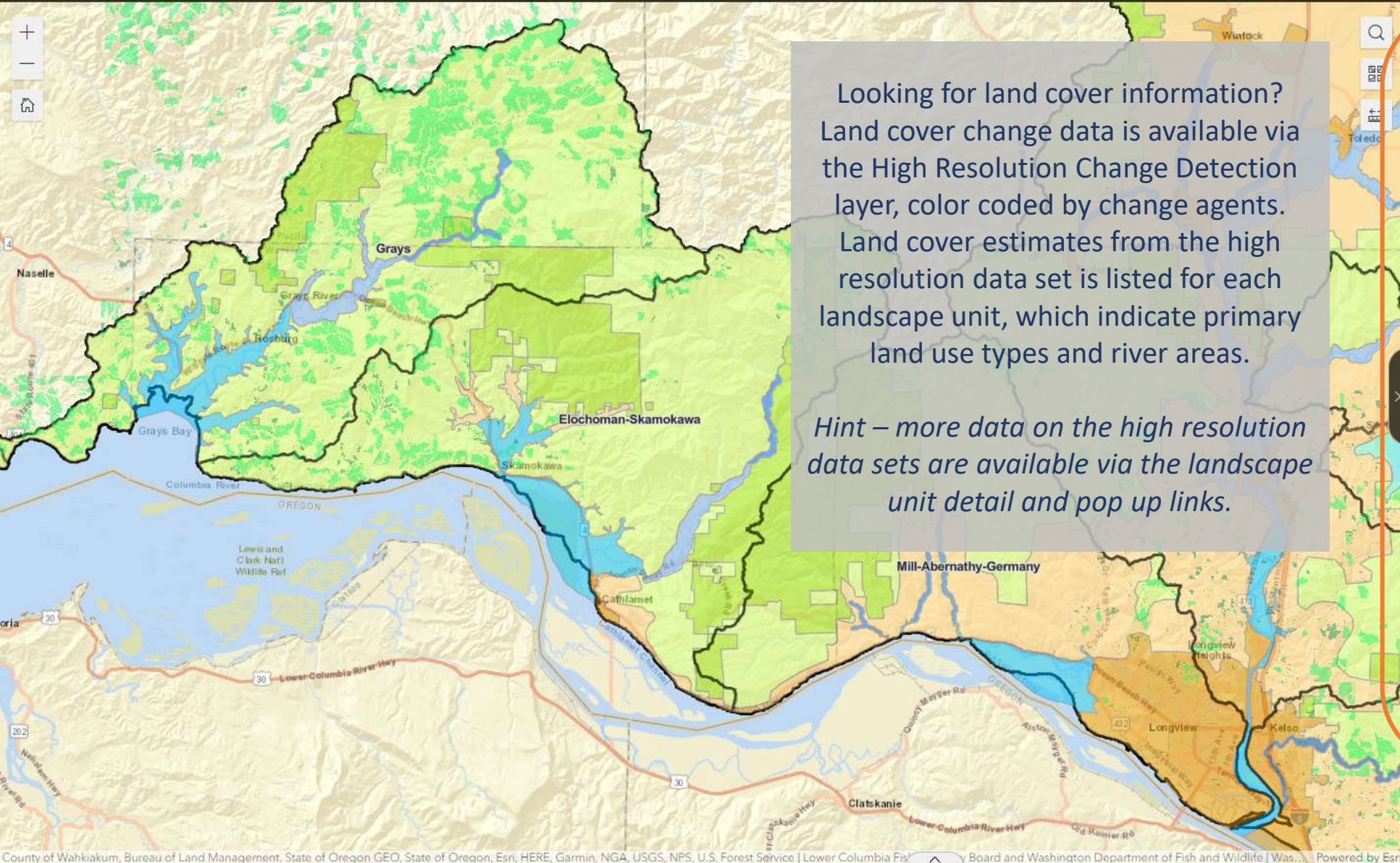
Legislative Districts



Lower Columbia Salmon Resource Map



Layers Filter Add Data Draw Print



Looking for land cover information?
Land cover change data is available via the High Resolution Change Detection layer, color coded by change agents. Land cover estimates from the high resolution data set is listed for each landscape unit, which indicate primary land use types and river areas.

Hint – more data on the high resolution data sets are available via the landscape unit detail and pop up links.

High Resolution Change Detection

- Development
- Redevelopment
- Tree Removal
- Forestry
- Retention Pond
- Stream
- Other

Upper Cowlitz-Cispus Habitat Actions

Upper Cowlitz-Cispus Landscape Units

Lower Columbia River Landscape Units

- Broad Alluvial Floodplain Valleys
- Columbia River Plain or Tidal Influenced
- Lakes, Reservoirs, or Major Wetlands
- Large River Channels
- Medium River Channels
- National Forest - Nonreserved
- National Forest - Reserved
- Private Forest Lands
- Rural Residential and Agriculture
- State Forest Lands
- Urban

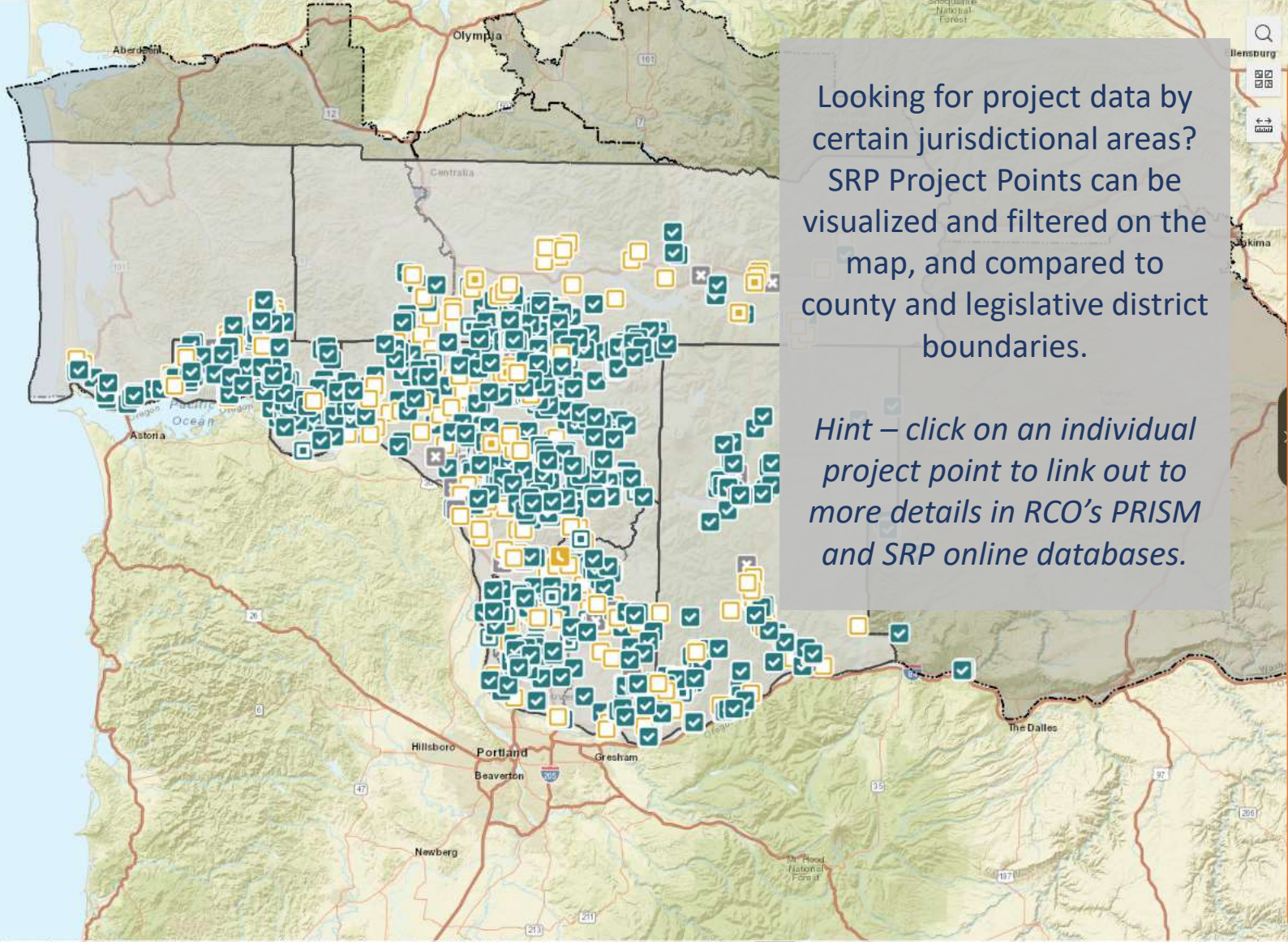
Lower Columbia River Subbasins



Lower Columbia Salmon Resource Map



Layers Filter Add Data Draw Print



Looking for project data by certain jurisdictional areas? SRP Project Points can be visualized and filtered on the map, and compared to county and legislative district boundaries.

Hint – click on an individual project point to link out to more details in RCO’s PRISM and SRP online databases.

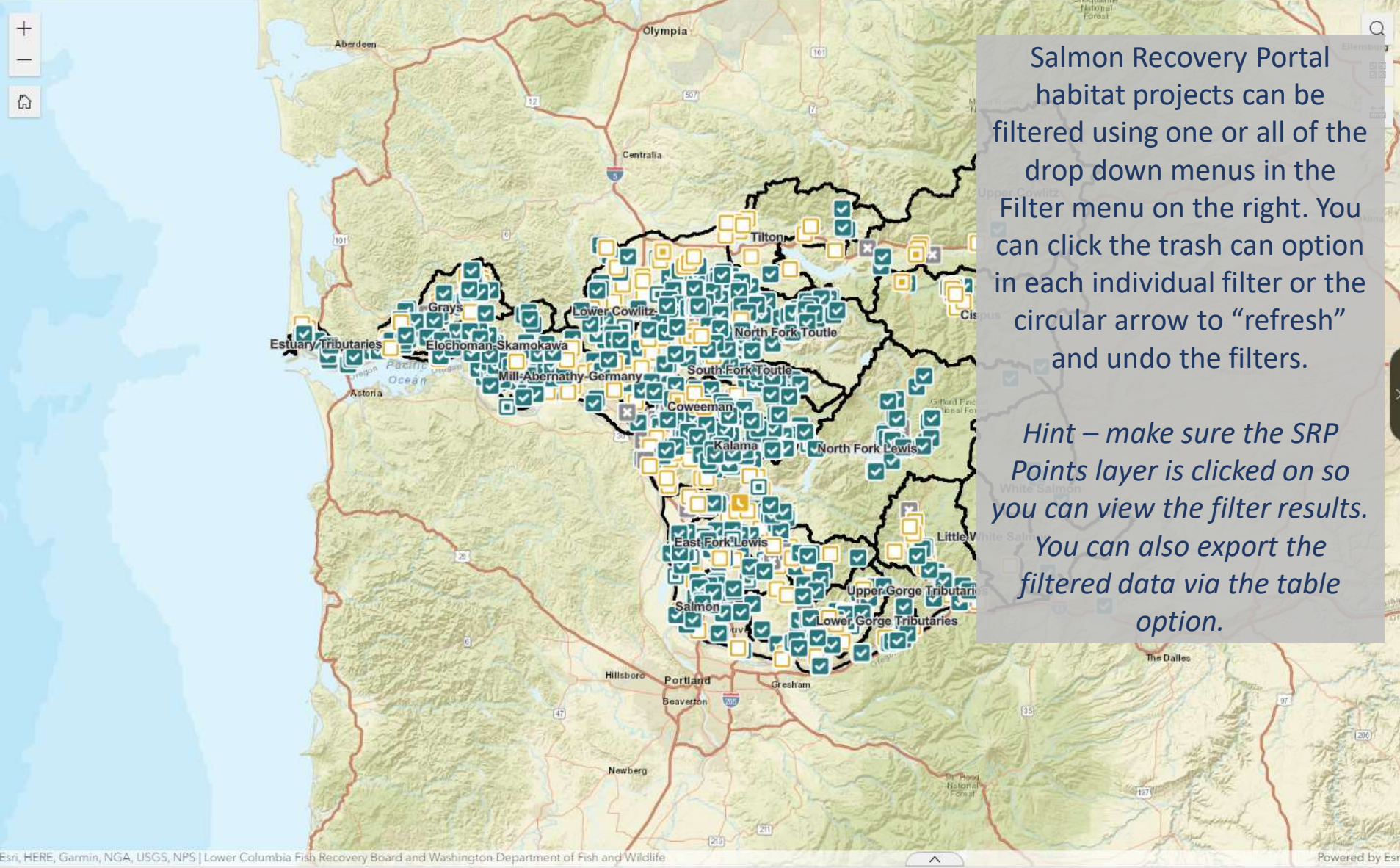
- SRP Project Points
 - COMPLETED
 - ACTIVE
 - APPROVED
 - ALTERNATE
 - PROPOSED
 - PLANNED
 - DORMANT
- Statewide Washington Integrated Fish Distribution
- Lower Columbia River EDT Habitat Priorities
- High Resolution Change Detection
- Upper Cowlitz-Cispus Habitat Actions
- Upper Cowlitz-Cispus Landscape Units
- Lower Columbia River Landscape Units
- Lower Columbia River Subbasins
- Water Resource Inventory Areas
- Estuary Boundary
- Sections
- Parcel Boundaries
- County Boundaries
- [Empty Layer]
- Legislative Districts



Lower Columbia Salmon Resource Map



Layers **Filter** Add Data Draw Print



Salmon Recovery Portal habitat projects can be filtered using one or all of the drop down menus in the Filter menu on the right. You can click the trash can option in each individual filter or the circular arrow to “refresh” and undo the filters.

Hint – make sure the SRP Points layer is clicked on so you can view the filter results. You can also export the filtered data via the table option.

Project Display Status
0 Selected

Project Type
0 Selected

Primary Sponsor
0 Selected

Project Primary Program
0 Selected
SRFB grants are funded by Salmon Federal and Salmon State programs.

Total project budget is greater than

Enter a number without \$ or commas

Total project budget is less than

Enter a number without \$ or commas

Project Start Date is between
 and
Click on the month and year in the calendar icon for further drop-down selection.

